





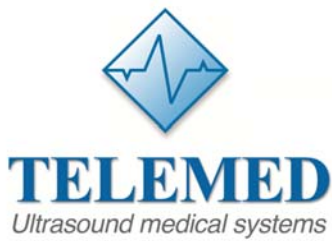
 <p>Linear</p>	LV8-5L60N-2	128 Elements	5.0 - 8.0 MHz	-	60 mm											
---	-------------	--------------	---------------	---	-------	--	--	--	--	--	--	--	--	--	--	--

\* Our products are under constant development, so their design and specifications are indicative and may change at any time

MICRO CONVEX - Transducers		Parameters				Applications										
Photo	CODE / Model	Elements Crystals	Freq. range MHz	Radius Curv. mm	Field of View degrees mm	Abdomen	OB.-Gyn.	Vascular	Small Parts	MSK/Neurol.	Pediatry	Cardiology	Transrectal	Transvaginal	Vascular Access	Interventional
 <p>Micro Convex</p>	MC10-4R12N-4	128 Elements	4.0 - 10.0 MHz	12 mm	150°			■	■	■	■					
 <p>Micro Convex</p>	MC10-5R20NI-3	128 Elements	5.0 - 10.0 MHz	20 mm	104°				■	■	■	■				
 <p>Micro Convex</p>	MC5-2R20N-3	128 Elements	2.0 - 5.0 MHz	20 mm	104°	■						■				
 <p>Micro Convex</p>	MC10-5R10N-3	128 Elements	5.0 - 10 MHz	10 mm	156°			■	■	■	■					

 Endocavitary Micro Convex	MCV9-5R10N-3	128 Elements	5.0 - 9.0 MHz	10 mm	160°											
---	--------------	-----------------	------------------	-------	------	--	--	--	--	--	--	--	--	--	--	---

*\* Our products are under constant development, so their design and specifications are indicative and may change at any time*



**TELEMED Medical Systems**

Via E. Villoresi, 24  
 20143 Milano - Italy

Phone: +39 02 36594100

Mobile: +39 348 3190513

Email: [info@telemedultrasound.com](mailto:info@telemedultrasound.com)

Web: [www.telemedultrasound.com](http://www.telemedultrasound.com)

Manufactured by:

**TELEMED Ltd**

Highway Business Center

Savanorių pr. 178A

Vilnius LT-03154,

Lithuania

Email: [info@telemed.lt](mailto:info@telemed.lt)

Web: [www.pcultrasound.com](http://www.pcultrasound.com)